

# **Route 134**

*Updated: December 2011*

From Route 38 six miles north of Duchesne northerly via Mountain Home to Indian Reservation boundary. To Mountain Home May 9, 1939, to Reservation May 13, 1941.

## **1953 Description:**

From Route 35 six miles north of Duchesne via Mountain Home to U.S. Indian Reservation boundary.

## **Approved by 1963 Legislature:**

**\*\*(\*A) Scanned)Commission Action July 31, 1964.**

## **1964 Description:**

From SR-87 north via Mountain Home to the Uintah and Ouray Indian Reservation Grazing Land boundary. July 31, 1964.

## **1965 Legislature:**

(A portion of this route transferred to SR-87 Duchesne northerly to 2.9 miles south of Mountain Home.)

## **1967 Legislature:**

## **1969 Legislature:**

Deleted from the State System by the **1969 Legislature.**

## **\*B) 1977 Commission Action (May 20, 1977):**

*Added* to the State System by Commission Action 5/20/77, State Route 134 replaces the 1975 description of State Route 40.

## **1977 Description:**

From Kaneshville on State route 37 northerly to Plain City, thence easterly to Pleasant View on State Route 89.

## **1979 Legislature Description:**

From Route 37 at Kaneshville northerly to Plain City; thence easterly to Route 89 in Pleasant View.

**1981 Legislature:** Description remains the same.

**1983 Legislature:** Description remains the same.

**1985 Legislature:** Description remains the same.

**1986 Legislature:** Description remains the same.

**1987 Legislature:** Description remains the same.

**1988 Legislature:** Description remains the same.

**1990 Legislature:** Description remains the same

## **Route 134 Cont.**

**1992 Legislature:** Description remains the same.

**1993 Legislature:** Description remains the same.

**1994 Legislature:** Description remains the same.

**1995 Legislature:** Description remains the same.

**1996 Legislature:** Description remains the same.

**1997 Legislature:** Description remains the same.

### **1998 Legislative Description:**

From Route 37 at Kanesville northerly to Plain City; then easterly to Route 89 in Pleasant View.

**1999 Legislature:** Description remains the same.

**2000 Legislature:** Description remains the same.

**2001 Legislature:** Description remains the same.

**2002 Legislature:** Description remains the same.

**2003 Legislature:** Description remains the same.

*\*(C) Commission Action June 18, 2004:*

*Addition:* From US-89 traversing on 2600 North to Washington Boulevard (SR-235).

### **2004 Legislature:**

From Route 37 at Kanesville northerly to Plain City; then easterly to Route 235 in North Ogden.

**2005 Legislature:** Description remains the same.

**2006 Legislature:** Description remains the same.

**2007 Legislature:** Description remains the same.

**2008 Legislature:** Description remains the same.

**2011 Legislature:** Description remains the same.

\* Refers to resolution index page following.

\*\*Refers to Scanned Computer Resolution index on the following page.

## **Route 134**

### **COUNTY/VOLUME & RESOLUTION NO.**

A. Duchesne Co. 1/77   B. Duchesne Co. 4/10   C. Weber Co. 11/8

### **DESCRIPTION OF RESOLUTION CHANGE**

- |                                 |  |
|---------------------------------|--|
| (A). Extension -                | From junction with SR-6 to the junction of SR-134, thence northerly to the junction of SR-134 and SR-221, thence to the junction with SR-87. |
| (B). Relocation/New Alignment - | Northeast of Talmage.  |
| (C). Addition-                  | From US-89 traversing on 2600 North to Washington Boulevard (SR-235) in North Ogden.   |

U-35-7-87-10  
U-86-7-87-2205  
U-87-0am  
U-134-7-87-1-6  
U-221-7-87-2105

RESOLUTION

State Routes 35, 86, 87, 134, 221  
35 86 87 134 221

WHEREAS, to maintain continuity in the designation of State Routes in the Blue Bench area, north and east of Duchesne City; and

WHEREAS, Representatives of the Utah State Department of Highways, the governing bodies of Altonah, Bluebell, Mountain Home, Duchesne County and the Area Commissioner of the Utah State Road Commission conducted a field trip over all State Routes in the area; and

WHEREAS, there was mutual agreement of all agencies; and

WHEREAS, there will be no increase in State Route mileage,

NOW THEREFORE, be it resolved as follows:

1. That the State Route designation of 87 will commence at the present junction of State Route 6 and 35 in Duchesne City, traversing that portion of State Route 35 to the present junction of State Routes 35 and 134, thus deleting the designation of State Route 35 for this section of roadway, thence northerly traversing the existing portion of State Route 134 to the present junction of State Routes 134 and 221, south of Mountain Home, thus deleting the designation of State Route 134 for this section of roadway, thence continuing easterly traversing existing State Route 221 to its junction with present State Route 86, south of Altonah, thus deleting the State Route designation of 221, thence east, southeasterly and south, traversing existing State Route 86 to its junction with State Route 87, thus deleting the designation of State Route 86 for this section of roadway, thence east via existing State Route 87 to its junction with State Route 6 southwest of Roosevelt.

2. That with the re-designation of State Route 87, the following interim designations be adopted subject to the approval of the legislature:

State Route 35 - From Wanship on Route 2 via Peoa, Kamas and Tabiona to Route 87.

SR- 35,86,87  
134 & 221  
77

State Route 86 - From Route 6 southeast of Bridgeland, northerly via Bridgeland to Route 87.

State Route 87 - From Route 6 in Duchesne northerly, thence easterly via Altamont, thence southeasterly via Upalco thence east to Route 6 southwest of Roosevelt.

State Route 221 - From Route 87 in Altamont north to Altonah.

State Route 134 - From Route 87, north via Mountain Home to the Uintah and Ouray Indian Reservation Grazing Land Boundary.

State Route 199 - From Route 87, north to Bluebell, thence west to Route 87 east of Altamont.

3. That application be made to the U. S. Department of Commerce, Bureau of Public Roads, to have the Federal-aid Secondary Route designations changed to follow in continuity with the State Route designations.

Dated this 31st day of July, 1964.

STATE ROAD COMMISSION OF UTAH

Ernest Walsh  
Chairman

Fleming Delt  
Commissioner

Elmer Strong  
Commissioner

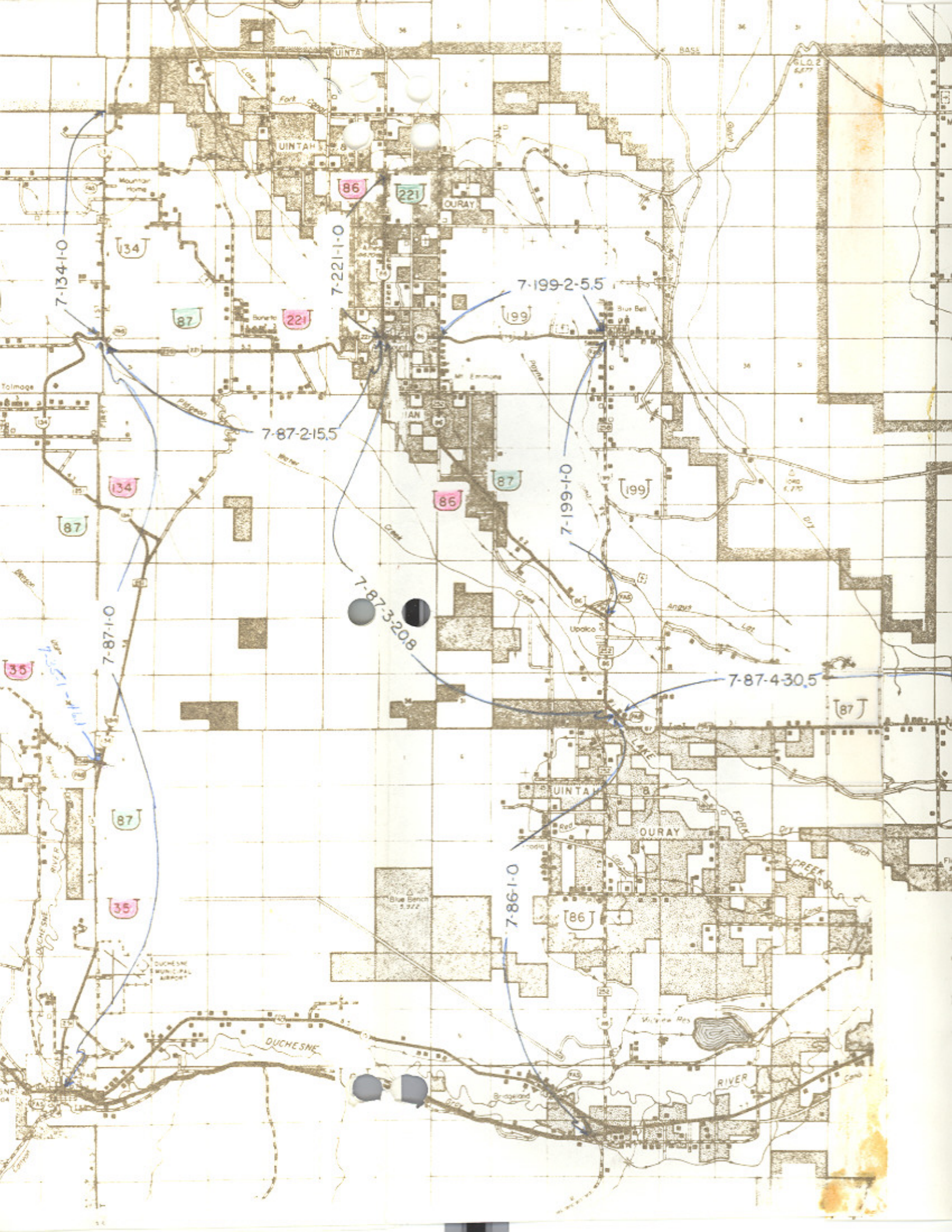
Ames K. Bagley  
Commissioner

\_\_\_\_\_  
Commissioner

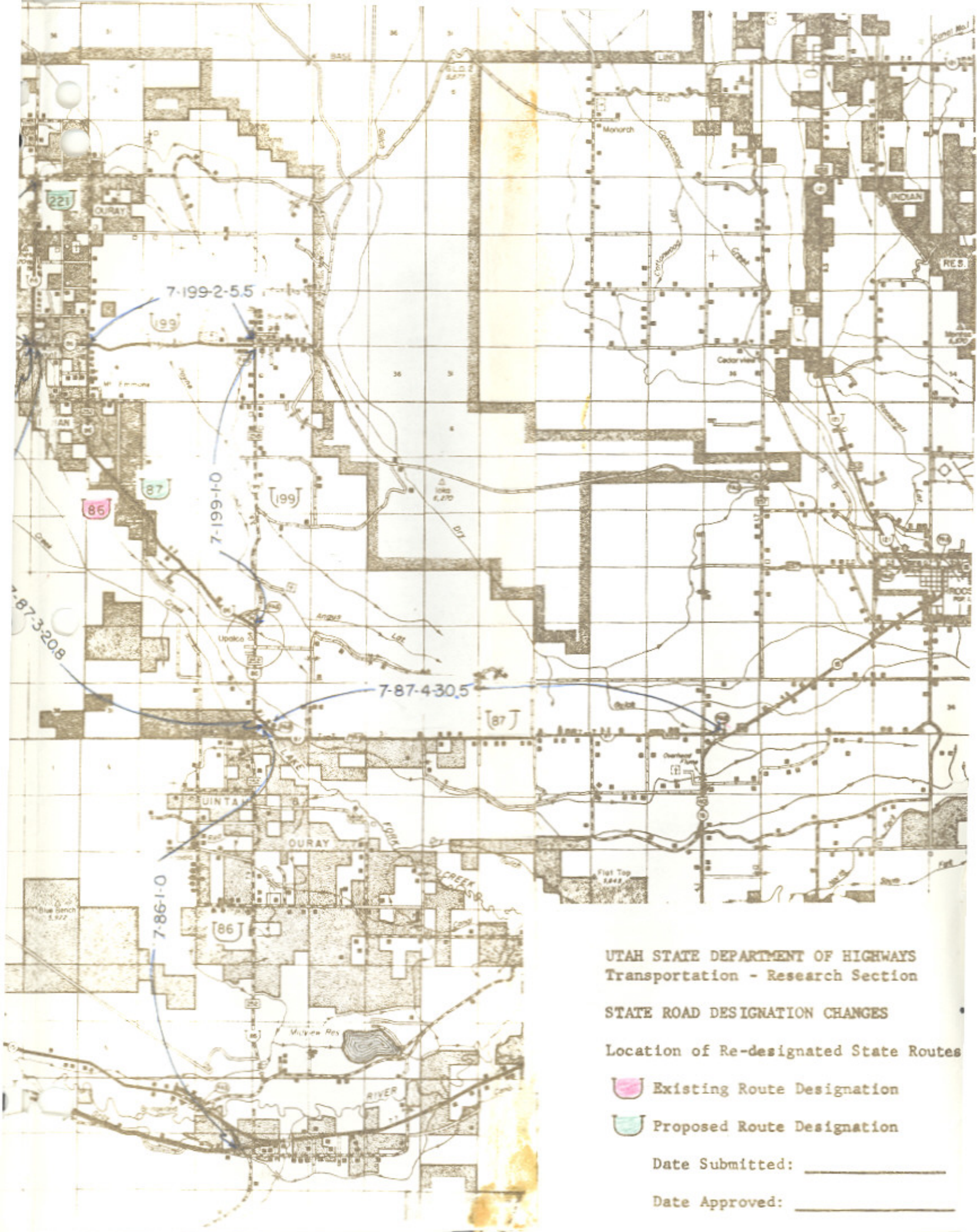
ATTEST:

Lawrence W. Reed  
Secretary











UTAH STATE DEPARTMENT OF HIGHWAYS  
 Transportation - Research Section

STATE ROAD DESIGNATION CHANGES  
 Location of Re-designated State Routes

-  Existing Route Designation
-  Proposed Route Designation

Date Submitted: \_\_\_\_\_

Date Approved: \_\_\_\_\_



RESOLUTION

Redesignation of Various State Routes

WHEREAS, it has been determined that it would be advantageous for record keeping and developing a Highway Reference System that various state routes be redesignated by hierarchy with the route number being synonymous with the US route designation, and

WHEREAS, this proposed revision of State Route Designations is concurred in by all District Directors.

NOW THEREFORE, be it resolved as follows:

That Interstate Route 15 be designated as State Route 15 and by this action delete the designation of State Route 1 and redesignate present State Route 15 as State Route 9,

That Interstate Route 80 be designated as State Route 80 and by this action delete the designation of State Route 2 and redesignate present State Route 80 as State Route 92,

That Interstate Route 80N be designated as State Route ~~82~~<sup>84</sup> and by this action delete the designation of State Route 3 and redesignate present State Route ~~82~~<sup>84</sup> as State Route ~~126~~<sup>82</sup>,

That Interstate Route 70 be designated as State Route 70 and by this action delete the designation of State Route 4 and redesignate present State Route 70, part of State Route 102, part of State Route 69, part of State Route 16 and State Route 51 as State Route 30 and by this action delete the designation of State Route 51,

That Interstate Route 215 be designated as State Route 215 and by this action delete the designation of State Route 5,

That US-6 and 50 from the Utah-Nevada State line to Delta be designated as State Route 6 and that US-6 from Delta to the junction with I-70 west of



RESOLUTION

Redesignation of Various State Routes

Page 2

Green River also be designated as State Route 6 and by this action delete the designation of State Route 27,

That US-40 be designated as State Route 40 and by this action delete the designation of State Route 6 and redesignate present State Route 40 as State Route 134,

That US-50 from Delta to Salina be designated as State Route 50 with the exception of that section coincident with Interstate Route 15 and by this action delete the designation of State Route 26 and redesignate a part of present State Route 50 as State Route 26,

That US-89 be designated as State Route 89 with the exception of those sections coincident with Interstate Route 70, US-6, I-15 and US-91 and by this action delete the designation of State Route 259, part of State Route 11, part of State Route 28, State Route 32, State Route 8, State Route 271, part of State Route 106, State Route 169, State Route 49, part of State Route 50, part of State Route 84, State Route 13 and the remaining part of State Route 16, redesignate present State Route 89 as State Route 169 and redesignate that portion of State Route 84 from Brigham northerly to State Route 30 as State Route 13,

That US-91 be redesignated as State Route 91 and by this action delete the designation of State Route 85,

That US-189 be designated as State Route 189 with the exception of those sections coincident with US-40 and Interstate Route 80 and by this action delete the designation of State Route 7, 151 and part of State Route 35,

That US-163 be designated as State Route 163 and by this action delete the designation of State Route 47, part of State Route 9 and redesignate present State Route 163 as State Route 78,

That US-666 be designated as State Route 666 and by this action delete

RESOLUTION

Redesignation of Various State Routes

Page 3

the remaining portion of State Route 9,

That as a result of the aforementioned revisions the State Routes involved will be described as follows:

Route 6 From the Utah-Nevada State line easterly via Delta and Tintic Junction, thence easterly via Santaquin, Payson and Spanish Fork to Moark Junction, thence easterly via Spanish Fork Canyon and Price to Route 70 (Interstate Route 70) west of Green River.

Route 9 From Harrisburg Junction on Route 15 (Interstate Route 15) easterly to Zion National Park south boundary, thence from Zion National Park east boundary to Mt. Carmel Junction on Route 89.

Route 11 From the Utah-Arizona State line north to a junction with Route 89 in Kanab.

Route 13 From a junction with Route 91 in Brigham City northerly via Bear River and Haws Corner to a point south of Riverside, thence east to Route 30 north of Collinston.

Route 15 From the Utah-Arizona State line near St. George to the Utah-Idaho State line south of Malad, Idaho, (traversing the alignment of Interstate Route 15). Segments of present State Routes used as Interstate Traveled-way will remain State responsibility until these segments are replaced by completed Interstate Projects.

Route 16 From the Utah-Wyoming State line northerly to Route 30 at Sage Creek Junction.

Route 26 From Route 84 in Roy easterly to Route 89 in Ogden (Former SR-50 Part).

Route 28 From a junction with Route 89 in Gunnison northerly via Levan to a junction with Route 15 (Interstate Route 15) north of Levan.

Route 30 From the Utah-Nevada State line northeasterly via Curlew Junction to Route ~~82~~<sup>84</sup> (Interstate Route 80N) west of Snowville. Then commencing



RESOLUTION  
Redesignation of Various State Routes  
Page 4

again at a junction with Route ~~82~~<sup>84</sup> (Interstate Route 80N) west of Tremonton easterly via Tremonton, Haws Corner and Collinston to Route 91 in Logan. Then commencing again at a junction with Route 89 in Garden City southeasterly via Sage Creek Junction to the Utah-Wyoming State line.

✓ Route 35 From Route 189 at Francis southeasterly via Tabiona to Route 87 north of Duchesne.

✓ Route 40 From Silver Creek Junction on Route 80 (Interstate Route 80) easterly via Heber City, Duchesne and Vernal to the Utah-Colorado State line.

✓ Route 50 From Route 6 in Delta southeasterly to Holden, thence northerly to Route 15 (Interstate Route 15) and commencing again on Route 15 (Interstate Route 15) near Scipio southeasterly via Scipio to a junction with Route 89 in Salina.

✓ Route 69 From Brigham on Route 13 northerly via Honeyville to Route 30 at Deweyville.

✓ Route 70 From Route 15 (Interstate Route 15) near Cove Fort to the Utah-Colorado State line west of Grand Junction, Colorado, (traversing the alignment of Interstate Route 70). Segments of present State Routes used as Interstate Traveled-way will remain State responsibility until these segments are replaced by completed Interstate Projects.

✓ Route 78 From Route 15 (Interstate Route 15) west of Levan east to Route 28 in Levan.

✓ Route 80 From the Utah-Nevada State line near Wendover to the Utah-Wyoming State line west of Evanston, Wyoming, (traversing the alignment of Interstate Route 80). Segments of present State Routes used as Interstate Traveled-way will remain State responsibility until these segments are replaced by completed Interstate Projects.

RESOLUTION  
Redesignation of Various State Routes  
Page 5

✓ <sup>84</sup>  
Route ~~82~~ From the Utah-Idaho State line near Snowville to a point on Route 15 (Interstate Route 15) near Tremonton, thence from another point on Route 15 (Interstate Route 15) near Roy to Route 80 (Interstate Route 80) near Echo, (traversing the alignment of Interstate Route <sup>84</sup>~~80~~). Segments of present State Routes used as Interstate Traveled-way will remain State responsibility until these segments are replaced by completed Interstate Projects.

✓ <sup>126</sup>  
Route ~~84~~ From Route 15 (Interstate Route 15) south of Layton northerly to Route 89 at Hot Springs Junction.

✓ Route 89 From the Utah-Arizona State line northwest of Page, Arizona, westerly to Kanab, thence northerly to a junction with Route 70 (Interstate Route 70) at Sevier Junction. Then commencing again at the junction with Route 70 (Interstate Route 70) south of Salina northerly via Salina, Gunnison and Mt. Pleasant to a junction with Route 6 at Thistle Junction. Then commencing again at a junction with Route 6 at Moark Junction northerly via Springville, Provo, Orem and American Fork to Route 15 (Interstate Route 15) north of Lehi. Then commencing again at a junction with Route 15 (Interstate Route 15) near Draper Crossroads northerly via Murray and Salt Lake City to a junction with Route 15 (Interstate Route 15) at Becks Interchange. Then commencing again at a junction with Route 15 (Interstate Route 15) near Orchard Drive northerly via Bountiful to a junction with Route 15 (Interstate Route 15) at North Bountiful Interchange. Then commencing again at a junction with Route 15 (Interstate Route 15) at Lagoon Junction northerly via Uintah Junction and Ogden to Route 91 near south city limits of Brigham City. Then commencing again at a junction with Route 91 in Logan northeasterly to Garden City, thence north to the Utah-Idaho State line.

○ Route 91 From Route 15 (Interstate Route 15) south of Brigham, thence



RESOLUTION  
Redesignation of Various State Routes  
Page 6

easterly via Brigham Canyon and Logan to the Utah-Idaho State line near Franklin, Idaho.

✓ Route 92 From Route 15 (Interstate Route 15) near Point of the Mountain east via American Fork Canyon to Route 189 in Provo Canyon.

✓ Route 102 From Route 83 east of Lampo Junction northeasterly via Penrose and Thatcher to Route ~~82~~<sup>84</sup> (Interstate Route ~~80N~~<sup>84</sup>) west of Tramonton.

✓ Route 106 From Route 89 northerly via Second West and Fourth North in Bountiful, thence northerly to Sheppard Lane in Farmington, thence east to Route 89.

✓ Route ~~126~~<sup>82</sup> From Route 30 in Tremonton north via 300 East to Garland, thence east approximately 0.8 mile, thence north to Route 13.

✓ Route 134 From Kanesville on Route 37 northerly to Plain City, thence easterly to Pleasant View on Route 89.

✓ Route 163 From the Utah-Arizona State line southwest of Mexican Hat northerly via Blanding, Monticello and Moab to Route 70 (Interstate Route 70) at Crescent Junction.

✓ Route 169 From Route 162 east to Eden on Route 166.

✓ Route 189 From Route 15 (Interstate Route 15) south of Provo northerly via University Avenue and Provo Canyon to Route 40 south of Heber. Then commencing again from Route 40 at Hailstone Junction easterly to Francis, thence northerly via Kamas to Route 80 (Interstate Route 80) south of Wanship.

✓ Route 215 From a junction with Route 80 (Interstate Route 80) near the mouth of Parleys Canyon southeast of Salt Lake City, southwesterly near the south city limits of Murray, junctioning with Route 15 (Interstate Route 15), thence northwesterly, northerly and easterly to a junction with Route 15 (Interstate Route 15) north of Salt Lake City, (traversing the alignment of Interstate Route 215).

Route 666 From Route 163 at Monticello east to the Utah-Colorado State line.

State  
Charters

RESOLUTION  
Redesignation of Various State Routes  
Page 7

The maps presented relating the action taken herewith are hereby a part of this resolution and will be stored at the office of the Planning Statistics Section of the Transportation Planning Division.

Dated this 20<sup>th</sup> day of May, 1977.

UTAH TRANSPORTATION COMMISSION

B. L. L. L.

Chairman

W. L. L.

Vice-Chairman

C. E. L.

Commissioner

G. A. L.

Commissioner

S. L. L.

Commissioner

ATTEST:

D. A. L.  
Secretary



2

STATE ROUTES REQUIRING CHANGES IN ROUTE DESIGNATION SIGNING

| <u>Existing Designation</u> | <u>New Designation</u> | <u>District</u> | <u>Miles</u> |
|-----------------------------|------------------------|-----------------|--------------|
| SR-15                       | SR-9                   | 5               | 32.6         |
| SR-15                       | SR-9                   | 3               | 12.3         |
| SR-80                       | SR-92                  | 6               | 26.8         |
| SR-82                       | SR-126                 | 1               | 3.1          |
| SR-40                       | SR-134                 | 1               | 12.4         |
| SR-50 Part                  | SR-26                  | 1               | 3.8          |
| SR-89                       | SR-169                 | 1               | 0.6          |
| SR-84                       | SR-13                  | 1               | <u>27.8</u>  |
|                             |                        | Total           | 119.4        |

SR-70, SR-102, SR-69, SR-16 and SR-51 in District 1, remove rectangular route signs from sign posts.

US-89 signs thru Sevier Valley will be replaced with "Temporary I-70" signs with rectangular signs under the Temporary I-70 sign indicating the State Route designation until completion of I-70 thru this area. Upon completion of I-70 between Sevier Junction and Salina all State Routes will be resigned by their designated State Route, District 3

Present State Routes 15 and 80 will be dual route signed for a period of approximately two years as a guide to Tourists, Districts 5, 3 and 6

All directional signing (junction signs, etc.) affected by these revisions will also require changing.

# Memorandum

UTAH STATE DEPARTMENT OF HIGHWAYS

DATE: June 2, 1977

TO : District Directors

FROM : L. R. Jester, P.E. *L.R.J.*  
Engineer for Transportation Planning

SUBJECT: Redesignations of State Routes

On May 20, 1977, the Utah Transportation Commission approved the redesignations of various State Routes as described in the attached resolution. Please review the changes that have been approved in your District and notify all interested agencies within your area.

Attachment

Note: All Districts refer to last page of resolution for necessary signing changes.



UTAH STATE DEPARTMENT OF HIGHWAYS

June 2, 1977

C  
O  
P  
Y

Mr. Norman V. Hancock, Chief  
Game Management Section  
Utah State Division of Wildlife Resources  
1596 West North Temple  
Salt Lake City, Utah 84104

Subject: Redesignation of State Routes

Dear Mr. Hancock:

On May 20, 1977, the Utah Transportation Commission approved the redesignations of the various State Routes as described in the enclosed Resolution.

Yours very truly,

L. R. Jester, P.E.  
Engineer for Transportation Planning

LRJ/BDB/WDM/BDent/cs  
Enclosure

cc: H.B. Leatham

Memo sent to all District Engineers & interested state personnel.

Also sent to: Mr. Marvin E. Blase, U.S. Dept. of Soil Conservation  
Mr. Ralph Hodges, Utah Fording & Bridge Company

State  
Changyos  
2

1/13/80

# AMERICAN ASSOCIATION OF STATE HIGHWAY AND TRANSPORTATION OFFICIALS

ROBERT N. HUNTER, President  
Chief Engineer  
Missouri State Highway Department



HENRY E. STAMMILL, Executive Director  
444 N. Capitol Street, N.W., Suite 225  
Washington, D. C. 20001  
Telephone (202) 624-5800

July 12, 1977

- Mr. Blaine J. Kay, Director  
Utah Department of Transportation
- Mr. Darrell V. Manning, Director  
Idaho Transportation Department
- Mr. Robert A. Burco, Director  
Oregon Department of Transportation

*[Handwritten signature]*  
10 JUL 1977  
U.S. DEPARTMENT OF TRANSPORTATION

Gentlemen:

The Route Numbering Committee reviewed the application coming from the Idaho Department of Transportation, and concurred in by the Utah Department of Transportation, for the redesignation of I-80N.

After reviewing the application, together with objections raised by States of Washington and Oregon, the Committee voted to redesignate I-80N as I-84, subject to concurrence by the Federal Highway Administrator, and with the State of Oregon in consultation with the States of Utah and Idaho to make the determination when the sign change would take place; but no later than July 1st, 1980.

This action was reviewed by the Executive Committee at its meeting on July 7th, 1977, and concurred therein.

Sincerely,

*[Handwritten signature]*  
H. J. Rhodes  
Deputy Director

HJR:pw

cc: Mr. William Cox  
Federal Highway Administrator  
Federal Highway Administration

RECEIVED  
7-14-77

COPY OF LETTER RETAINED IN CENTRAL FILES RETURN THIS TO THE CENTRAL FILES AFTER ACTION HAS BEEN COMPLETED

SEARCHED INDEXED SERIALIZED FILED  
KAY

UTAH STATE DEPARTMENT OF HIGHWAYS

June 2, 1977

C  
Mr. Norman V. Hancock, Chief  
Game Management Section  
Utah State Division of Wildlife Resources  
1596 West North Temple  
Salt Lake City, Utah 84104

O  
Subject: Redesignation of State Routes

Dear Mr. Hancock:

P  
On May 20, 1977, the Utah Transportation Commission approved the redesignations of the various State Routes as described in the enclosed Resolution.

Y  
Yours very truly,

L. R. Jester, P.E.  
Engineer for Transportation Planning

LRJ/BDB/WDM/BDent/cs  
Enclosure

cc: H.B. Leatham

Memo sent to all District Engineers & interested state personnel.

Also sent to: Mr. Marvin W. Hines, U.S. Dept. of Soil Conservation  
Mr. Ralph Hodges, Utah Dept. of Agriculture



**RESOLUTION**

**Extension of State Highway SR-134  
Deletion of Portion of State Highway SR-235, Transferring Portions to  
North Ogden City and Pleasant View City  
Weber County**

**WHEREAS**, Sections 72-4-102 and 72-4-103, of the Utah Code Annotated 1953, as amended, authorize the Transportation Commission to approve additions to or deletions from the state highway system, along with return to county or municipality or abandonment between general sessions of the State Legislature, and

**WHEREAS**, the completion of a newly constructed highway (Project SR-0134(2)11) which provides an extension to SR-134 from US-89 to Washington Boulevard, which eliminates the operational need for an existing section of SR-235 (2550 North) from Milepost 3.070, Junction of Washington Boulevard to Milepost 4.860 Junction of US-89, as part of the State Highway System, and

**WHEREAS**, SR-235 will continue northerly on Washington Boulevard from 2550 North to SR-134 (2600 North) for 800± feet, and

**WHEREAS**, the duly appointed officials of North Ogden City have entered into an agreement dated August 7, 2003, with the Department of Transportation stipulating concurrence as to the transfer of portion of SR-235, and

**WHEREAS**, the duly appointed officials of Pleasant View City have entered into agreement dated April 20, 2004, with the Department of Transportation stipulating concurrence as to the transfer of portion of SR-235, and

**WHEREAS**, deletion of portion SR-235 from the State System of Highways has been requested through the Region One Director, having reviewed all material and correspondence related to stated deletion, and

**WHEREAS**, the appropriate staff of the Transportation Planning Division having reviewed all stipulations defined within this resolution, concurs with UDOT's Region One Director, for the justification of all recommendations defined herein.

**NOW THEREFORE**, be it resolved as follows:

1. Newly constructed roadway, Project SP-0134(2)11, creating extension of State Highway SR-134 from US-89 traversing on 2600 North to Washington Boulevard for 1.895± miles. The Functional Classification of this new segment will be Urban Minor Arterial.

Page Two

Extension of SR-134 & Deletion of Portion of SR-235 in  
Association with Project No. SR-0134(2)11  
Transfers to North Ogden City & Pleasant View City  
Weber County

2. The portion of SR-235 from Milepost 3.070 to Milepost 3.660, totaling .590± miles, will be removed from the State Highway System and included in North Ogden City's roadway system being functionally classified as Local.
3. The portion of SR-235 from Milepost 3.660 to Milepost 4.860, totaling 1.20± miles, will be removed from the State Highway System and included in Pleasant View City's roadway system being functionally classified as Local.
4. All transactions described herein will become effective upon completion of all projects, all roadways and streets being open to traffic, and passage by the Utah Transportation Commission.
5. The accompanying map (Exhibit "A"), and agreements be made part of this resolution.

Dated on the 18 day of June 2004

UTAH TRANSPORTATION COMMISSION

[Signature]  
Chairman

[Signature]  
Vice-Chairman

[Signature]  
Commissioner

[Signature]  
Commissioner

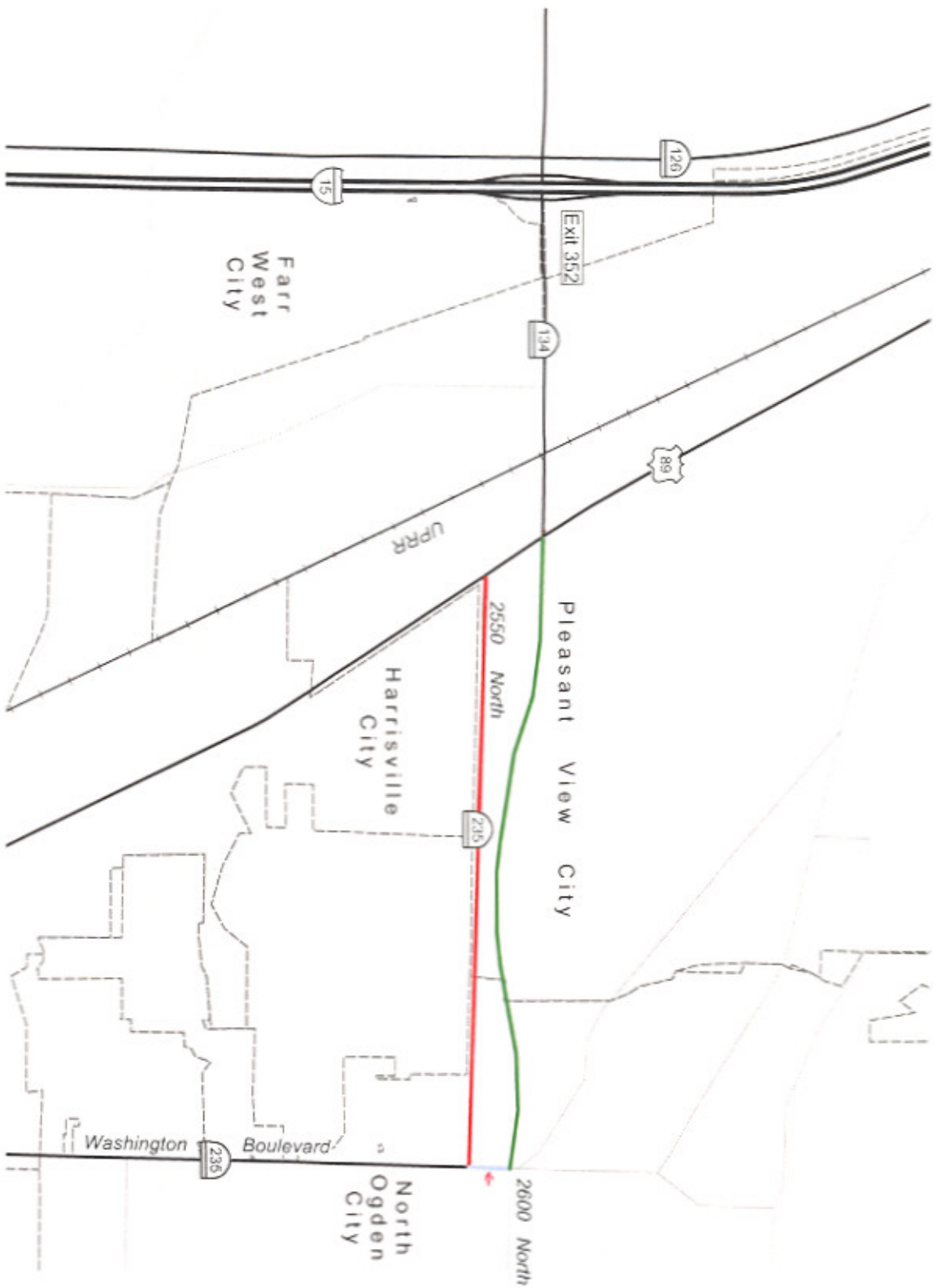
[Signature]  
Commissioner

[Signature]  
Commissioner

[Signature]  
Commissioner

Attest: [Signature]  
Secretary





Sheet 'A'

- Deleted from System
- Added to system as SR 235
- Added to system as SR 134


June '04



## Memorandum

DATE: July 22, 2004

TO: THOSE LISTED BELOW

FROM: John L. Quick, P.E.   
Engineer for Transportation Planning

SUBJECT: Extension of State Highway SR-134 & Deletion of Portion of  
State Highway SR-235, Weber County

Attached is a copy of the resolution and location map. Please distribute as needed.

JLQ/mb  
Attachment

|  |   |
|--|---|
| Mayor Lynn Muirbrook, North Ogden City           | David Kinnecom, ITS (TOC) Manager               |
| S. Annette Spendlove, Deputy City Recorder       | Richard Clarke, Engineer for Maintenance        |
| Mayor James R. Fisher, Pleasant View City        | Lynn Bernhard, Methods Planning Engineer        |
| Laurie Hansen, City Recorder                     | Jim McMinimee, Project Development Director     |
| Max Ditlevsen, Program Development Director      | Stan Burns, Engineer for Research & Develop.    |
| Lloyd Neeley, Pavement Management Engineer       | Fran Rieck, Statewide Permits Officer           |
| Gary Kuhl, Planning Statistical Engineer         | Lyle McMillan, Right of Way Chief               |
| Lee Theobald, Information Analyst Supervisor     | Warren Grames, Risk Manager                     |
| Jerry Arnold, HPMS Coordinator                   | Rae Ann Jensen, Records Supervisor              |
| Mark Fry, Transportation Data Planner            | David Nazare, Bridge Management Eng./Structures |
| Scott Nay, Road Inventory Supervisor             | Robert Hull, Engineer for Traffic & Safety      |
| Russ Scovil, Field Inventory Engineer            | Robert Clayton, Accident Information Manager    |
| Wayne Jager, Statewide Planning Engineer         | Zeke Gonzalez, Studies Engineer                 |
| Kelli Bacon, Chief Cartographer                  | Peter Jager, Traffic Studies Engineer           |
| Kim Schvaneveldt, Engineer for Programming       | John Leonard, Traffic Operations Engineer       |
| Brett Hadley, Local Government Program Eng       | Larry Montoya, Signal & Lighting Engineer       |
| Chris Glazier, GIS Coordinator                   | Glenn Schulte, Transportation Safety Specialist |
| Bret Anderson, STIP Coordinator                  | Peter Tang, Safety Transportation System        |
| Kathy Starks, Program Development Officer        | Major Neil Porter, Utah Highway Patrol          |
| Char Mitchell, Programming Coordinator           | Ahmad O. Jaber, Region One Director             |
| Leone Harwood, Transit Program Director          | Bruce Swenson, Region One Project Manager       |
| Linda Toy-Hull, Dir. Leg. & Government Affairs   | Rex Harris, Region One Preconstruction          |
| Chuck Larsen, Comptroller                        | Bill Smith, Area Supervisor                     |
| Darrell Giannonatti, Director for Const. & Matl. | Jack Brown, Shed 1422 Supervisor                |
| Jason Davis, Engineering Services Director       | Tommy Vigil, Region One Permits Officer         |
| Brent Jensen, Chief Environ. Engineer            | Nathan McCall, Region One Pavement Manger       |
| Keith Brown, Chief Geotechnical Engineer         |   |



Page Two

Extension of US-89 Project No. SR-0134(2)11

City of Draper, Salt Lake County

Dated on the 18 day of June 2004

UTAH TRANSPORTATION COMMISSION

[Signature]

Chairman

[Signature]

Vice-Chairman

[Signature]

Commissioner

[Signature]

Commissioner

[Signature]

Commissioner

[Signature]

Commissioner

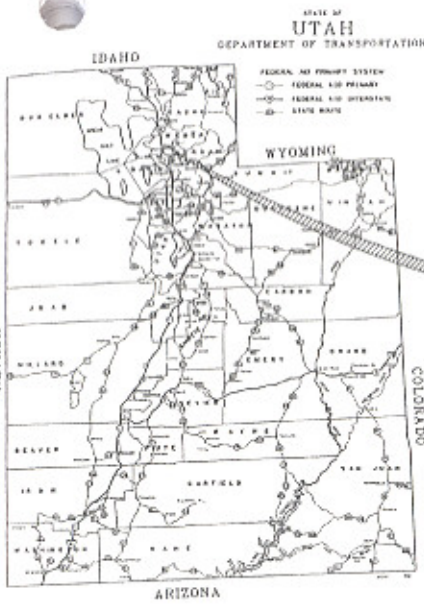
[Signature]

Commissioner

Attest: [Signature]  
Secretary

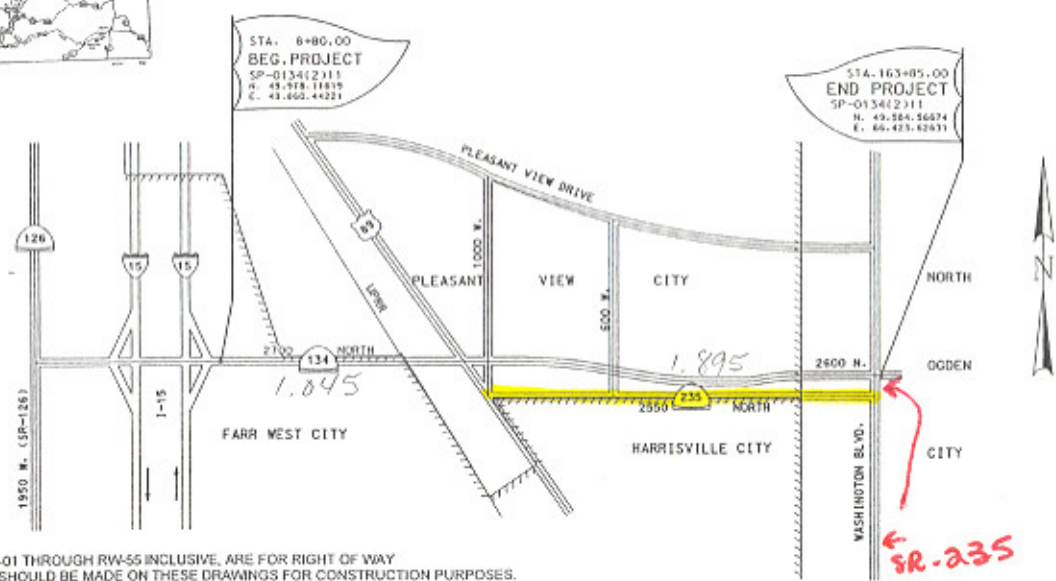
UTAH  
DEPARTMENT OF TRANSPORTATION

ALL DIMENSIONS  
ARE IN FEET  
UNLESS OTHERWISE NOTED



RIGHT OF WAY PLANS  
SR-134, (2700 NORTH);  
I-15 TO WASHINGTON BLVD., OGDEN  
SP-0134(2)11

LENGTH 2.940 MILES  
WEBER COUNTY



- NOTES:
1. THIS DRAWING PACKAGE, SHEETS RW-01 THROUGH RW-55 INCLUSIVE, ARE FOR RIGHT OF WAY REPRESENTATION ONLY. NO RELIANCE SHOULD BE MADE ON THESE DRAWINGS FOR CONSTRUCTION PURPOSES.
  2. THIS RIGHT OF WAY PACKAGE ESTABLISHES THE BOUNDARY LINES OF SAID PROJECT.
  3. STATION, OFFSET AND COORDINATE LOCATIONS FOR THE LAYOUT AND CONSTRUCTION OF THE RIGHT OF WAY MARKERS AND CONTROLLING LINES SHOULD BE ESTABLISHED FROM THE HIGHWAY DESIGN PACKAGE.
  4. THIS PACKAGE REPRESENTS THE STATE OF UTAH'S INTENT TO ACQUIRE FEE TITLE TO LANDS LYING WITHIN THE RIGHT OF WAY LINES OF 2700 NORTH STREET, SR-134, AND TO HOLD PERPETUAL AND TEMPORARY EASEMENTS FOR APPURTENANT PARTS THEREOF. THIS RIGHT OF WAY PACKAGE DOES NOT REPRESENT AN ACTUAL BOUNDARY SURVEY OF THE ADJOINING PARCELS REPRESENTED HEREIN.

**MERIDIAN**  
ENGINEERING & SURVEYING, L.C.  
ENGINEERS - SURVEYORS - CONSTRUCTION MANAGEMENT  
3027 South Redwood Road, Suite B, Red Jordan, Utah 84088  
PH: 801-688-1310 FAX: 801-688-1329 email: meridian@worldnet.att.net

UTAH DEPARTMENT OF TRANSPORTATION  
SALT LAKE CITY, UTAH  
RIGHT-OF-WAY

| NO. | DATE | BY | REVISION |
|-----|------|----|----------|
|     |      |    |          |
|     |      |    |          |
|     |      |    |          |

|                |              |       |                |                 |
|----------------|--------------|-------|----------------|-----------------|
| DESIGN         | BY: 400000   | CHECK | DATE: 02/20/00 | REVIEW          |
| DRAWN          |              | CHECK |                |                 |
| CALCULATED     |              | CHECK |                |                 |
| APPROVAL       |              |       |                |                 |
| APPROVED       | 5/1/03       |       |                | WEBER COUNTY    |
| PROJECT NUMBER | SP-0134(2)11 |       |                | SHEET NO. RW-01 |

001640

Project No. STP-3458(1)0, Weber County  
 SR-134, 2700 North, I-15 to Washington Blvd.  
**NORTH OGDEN CITY CORPORATION**  
**Jurisdictional Transfer of SR-235, 2550 North**  
 CID No. 50475      PIN 2582

COOPERATIVE AGREEMENT

THIS COOPERATIVE AGREEMENT, made and entered into this 7<sup>th</sup> day of Aug, 2003, by and between the UTAH DEPARTMENT OF TRANSPORTATION, hereinafter referred to as "UDOT", and NORTH OGDEN CITY CORPORATION, a Municipal Corporation of the State of Utah, hereinafter referred to as the "CITY",

WITNESSETH:

WHEREAS, UDOT is engaged in preparing plans, specifications and estimates of costs toward constructing a certain section of SR-134 known as Project No. STP-3458(1)0, SR-134, 2700 North, from I-15 to Washington Blvd. in Weber County, Utah; and

WHEREAS, UDOT's project includes the installation of certain improvements including sidewalks, stamped colored concrete parkstrips and landscaping items as shown on UDOT's plans, which by this reference are made a part hereof; that are within the Corporate Limits of the CITY; and

WHEREAS, in accordance with the Utah Criminal and Traffic Code, Section 72-3-109, the CITY has jurisdiction over that area between the back of curb and the right of way line, and is responsible for the perpetual operation and maintenance of said improvements; and

WHEREAS, said project includes the establishment of a new alignment and construction of a new roadway section of SR-134 from SR-89 to Washington Blvd.; and

WHEREAS, said roadway section will parallel and therefore eliminate the operational need for an existing section of SR-235 (2550 North) from Milepost 3.070 (Washington Blvd.) to Milepost 4.860 (US-89) as part of the State Highway System; and



Project No. STP-3458(1)0, Weber County  
SR-134, 2700 North, I-15 to Washington Blvd.  
**NORTH OGDEN CITY CORPORATION**  
**Jurisdictional Transfer of SR-235, 2550 North**  
CID No. 50475    PIN 2582

**WHEREAS**, the parties hereto have agreed that **UDOT** will fund certain improvements to, and the **CITY** will accept jurisdiction over, that portion of SR-235 within its' corporate limits, under the terms and conditions set forth herein; and

**WHEREAS**, **UDOT** has determined by formal finding that payment for said work on public right-of-way is not in violation of the laws of the State of Utah or any legal contract with the **CITY**.

This **COOPERATIVE AGREEMENT** is made to set out the terms and conditions whereunder said work shall be performed.

**NOW THEREFORE**, it is agreed by and between the parties hereto as follows:

1. **UDOT** has, with it's regular engineering forces, prepared plans, specifications and estimates and in conjunction with the above noted items of work will advertise for bids, will award a contract to the low bidder and will administer the construction of the work covered by this agreement, except as described below.
2. Upon completion of the project, the **CITY** has jurisdiction over and shall be responsible for the perpetual maintenance and renewal of the constructed improvements including the sidewalks, stamped colored concrete parkstrips, and landscaping. The **CITY** agrees to perform, and/or require the adjacent property owners to perform, all routine maintenance including, but not limited to, replacement of damaged sidewalk and stamped concrete, snow removal, mowing, watering, and replacement of dead or diseased grass, trees and shrubs, with no further cost to **UDOT**.
3. The **CITY**, with its regular engineering and construction forces, at its standard schedule of wages and working hours and in accordance with the terms of its agreement with such employees, or through qualified contractors with whom it has obtained contracts in compliance with its policies, will perform the necessary field and office engineering, design and award a contract to perform the work to be completed on 2550 North.

Project No. STP-3458(1)0, Weber County  
SR-134, 2700 North, I-15 to Washington Blvd.  
**NORTH OGDEN CITY CORPORATION**  
**Jurisdictional Transfer of SR-235, 2550 North**  
CID No. 50475 PIN 2582

4. Improvements requested by the **CITY** include the placement of a 24" pipe culvert and appurtenances and a 2" Asphalt Overlay of the pavement along 2550 North from the west **CITY** limits to Washington Blvd., estimated to cost One Hundred and Fifty Four Thousand, Two Hundred and Fifty Six Dollars and Thirty Cents (\$154,256.30), as shown in a Cost Estimate prepared by the **CITY**, a copy of which is marked "**EXHIBIT A**", attached hereto and thereby made a part hereof.
5. The **CITY** agrees to Quit Claim six described parcels of **CITY** owned property known as Parcels No. 0134:51, 0134:51S, 0134:51B, 0134:51B:S, 0134:51D and 0134:51F, required for the construction of the project, to **UDOT**. Said conveyances will be completed prior to **UDOT** executing this **COOPERATIVE AGREEMENT**.
6. Upon execution of this **COOPERATIVE AGREEMENT**, **UDOT** shall pay the **CITY** a lump sum amount of \$154,256.30, said amount being **UDOT's** total and complete contribution to the roadway improvements. Any cost incurred by the **CITY** in excess of this amount will be sole responsibility of the **CITY**.

**TOTAL LUMP SUM COST TO UDOT IS \$154,256.30**

7. Upon acceptance of said payment, and enactment of the jurisdictional transfer by the Utah Transportation Commission, that section of SR-235 from Milepost 3.070 to Milepost 3.660, totaling 0.59 miles, will be removed from the State Highway System and included in the **CITY's** roadway system. The **CITY** will thereafter have jurisdiction over said roadway section, and will be responsible for construction, maintenance, repairs, and operation of the roadway.
8. The **CITY** agrees to accept and maintain the roadway and appurtenances covered herein at no further cost to **UDOT**, except **CITY's** Class B & C Road Funds, which will be adjusted accordingly. To the extent it may be lawful to do so, the **CITY** further agrees to relieve **UDOT** from any responsibility or liability that may result from the transfer of said facilities and the operation thereof.



Project No. STP-3458(1)0, Weber County  
SR-134, 2700 North, I-15 to Washington Blvd.  
**NORTH OGDEN CITY CORPORATION**  
Jurisdictional Transfer of SR-235, 2550 North  
CID No. 50475 PIN 2582

IN WITNESS WHEREOF, the parties hereto have caused these presents to be executed by their duly authorized officers as of the day and year first above written.

ATTEST:

NORTH OGDEN CITY CORPORATION, a  
Municipal Corporation of the State of Utah

Sharonne Spendlove 8/4/03  
Name Date  
City Recorder  
Title  
(Impress Seal)



[Signature] 8-4-03  
Name Date  
Mayor  
Title

\*\*\*\*\*

RECOMMENDED FOR APPROVAL:

UTAH DEPARTMENT OF TRANSPORTATION

[Signature]  
Project Manager  
8/5/03  
Date

Daryl Ballantyne for Ahmad Sabar  
Region One Director  
8/7/03  
Date

APPROVED AS TO FORM:

As evidenced by the signature below, the Attorney General's Office has reviewed this Agreement pursuant to Utah Code Annotated, Section 11-13-9, and authorizes and approves it.

Approved:  
[Signature]  
UDOT Comptroller's Office,  
Contract Administrator  
8/13/03  
Date

UTAH ATTORNEY GENERAL  
MARK L. SHURTLEFF  
[Signature]  
JIM BEADLES,  
Assistant Attorney General



**STREET IMPROVEMENT PROJECTS****NORTH OGDEN CITY ( Funded by UDOT )****Cost Estimate**

Project No.: 1

Location: 2550 North Street – Washington Blvd. to west  
City limits of North Ogden City

Description: Open channel piping and street overlay

Date: March 2003 - REVISED 3/31/03 *KLL***EXHIBIT A**

Project No. STP-3458(1)0

| Item | Description  | Quantity | Unit | Unit Price                             | Total Amount        |
|------|--|----------|------|--|---------------------|
| 1    | Furnish and install 24" pipe culvert, class C with granular pipe bedding                   | 1,890    | lf   | \$27.00                                | \$51,030.00         |
| 2    | Furnish and install 4 ft. diameter cleanout manhole  | 5        | ea   | \$1,500.00                             | \$7,500.00          |
| 3    | Furnish and install imported granular backfill materials over pipe culvert in open channel | 3,750    | tons | \$8.00                                 | \$30,000.00         |
| 4    | Furnish and install AC-10 tack coat complete with geotextile overlay fabric                | 9,772    | s.y. | \$1.00                                 | \$9,772.00          |
| 5    | Furnish and install 2" Bituminous Surface Course Overlay (PG64-34)                         | 1,062    | tons | \$38.00                                | \$40,356.00         |
| 6    | Raise existing manholes and valve boxes to finish grade                                    | 7        | ea   | \$225.00                               | \$1,575.00          |
|      |  |          |      | <b>SUBTOTAL</b>                        | <b>\$140,233.00</b> |
|      |  |          |      | <b>10% Contingency and Engineering</b> | <b>\$14,023.30</b>  |
|      |  |          |      | <b>TOTAL</b>                           | <b>\$154,256.30</b> |

Pleasant View

City

520 W. Elberta Dr.  
Pleasant View, Ut 84414  
Main Office (801) 782-8529  
Police Dept. (801) 782-6736

April 20, 2004

Ahmad Jaber  
166 West Southwell Street  
Ogden, Utah 84404-4194

Dear Mr. Jaber,

Upon approval of the Cooperative Agreement for Roadway Improvements and Jurisdictional Transfer of SR-235, the Pleasant View City Council understands that prior to actual transfer of SR-235, UDOT will provide maintenance of SR-235 and repair any deficiencies that may occur to the road between now and that time.

Attached are five signed copies of the Cooperative Agreement for Roadway Improvements and Jurisdictional Transfer of SR-235.

Sincerely,

  
James R. Fisher, Mayor

RECEIVED

APR 22 2004

Utah Dept of Trans.  
Region One

Project No. SP-0134(2)11, Weber County  
SR-134, 2700 North, I-15 to Washington Blvd.  
**PLEASANT VIEW CITY CORPORATION**  
**Jurisdictional Transfer of SR-235, 2550 North**  
CID No. 78049 PIN 2572

COOPERATIVE AGREEMENT

THIS COOPERATIVE AGREEMENT, made and entered into this \_\_\_\_\_ day of \_\_\_\_\_, 20\_\_\_\_, by and between the UTAH DEPARTMENT OF TRANSPORTATION, hereinafter referred to as "UDOT", and PLEASANT VIEW CITY CORPORATION, a Municipal Corporation of the State of Utah, hereinafter referred to as the "CITY",

WITNESSETH:

WHEREAS, UDOT is engaged in preparing plans, specifications and estimates of costs toward constructing a certain section of SR-134 known as Project No. SP-0134(2)11, SR-134, 2700 North, from I-15 to Washington Blvd. in Weber County, Utah; and

WHEREAS, UDOT's project includes the installation of certain improvements including sidewalks, stamped colored concrete parkstrips and landscaping items as shown on UDOT's plans, which by this reference are made a part hereof; that are within the Corporate Limits of the CITY; and

WHEREAS, in accordance with the Utah Criminal and Traffic Code, Section 72-3-109, the CITY has jurisdiction over that area between the back of curb and the right of way line, and is responsible for the perpetual operation and maintenance of said improvements; and

WHEREAS, said project includes the establishment of a new alignment and construction of a new roadway section of SR-134 from SR-89 to Washington Blvd.; and

WHEREAS, said roadway section will parallel and therefore eliminate the operational need for an existing section of SR-235 (2550 North) from Milepost 3.070 (Washington Blvd.) to Milepost 4.860 (US-89) as part of the State Highway System; and



Project No. SP-0134(2)11, Weber County  
SR-134, 2700 North, I-15 to Washington Blvd.  
**PLEASANT VIEW CITY CORPORATION**  
**Jurisdictional Transfer of SR-235, 2550 North**  
CID No. 78049 PIN 2572

WHEREAS, the parties hereto have agreed that UDOT will fund certain improvements to, and the CITY will accept jurisdiction over, that portion of SR-235 within its' corporate limits, under the terms and conditions set forth herein; and

WHEREAS, UDOT has determined by formal finding that payment for said work on public right-of-way is not in violation of the laws of the State of Utah or any legal contract with the CITY.

This COOPERATIVE AGREEMENT is made to set out the terms and conditions whereunder said work shall be performed.

NOW THEREFORE, it is agreed by and between the parties hereto as follows:

1. UDOT has, with it's regular engineering forces, prepared plans, specifications and estimates and in conjunction with the above noted items of work will advertise for bids, will award a contract to the low bidder and will administer the construction of the work for SR-134 ( 2700 North) covered by this agreement, except as described below.
2. The CITY, with its regular engineering and construction forces, at its standard schedule of wages and working hours and in accordance with the terms of its agreement with such employees, or through qualified contractors with whom it has obtained contracts in compliance with its policies, will perform the necessary field and office engineering, design and award a contract to perform the work to be completed on 2550 North.
3. Improvements requested by the CITY include the placement and backfill of a 30" storm drain and appurtenances; a 2" asphalt overlay of the pavement along 2550 North from the east CITY limits to SR-89; and miscellaneous items of work estimated to cost Four Hundred and Sixty Two Thousand, Five Hundred Dollars (\$462,500.00), as shown in a Cost Estimate prepared by the CITY, a copy of which is marked "EXHIBIT A", attached hereto and thereby made a part hereof.

Project No. SP-0134(2)11, Weber County  
SR-134, 2700 North, I-15 to Washington Blvd.  
**PLEASANT VIEW CITY CORPORATION**  
Jurisdictional Transfer of SR-235, 2550 North  
CID No. 78049 PIN 2572

4. Upon execution of this **COOPERATIVE AGREEMENT**, UDOT shall pay the **CITY** a lump-sum amount of \$462,500.00, said amount being UDOT's total and complete contribution to the roadway improvements. Any cost incurred by the **CITY** in excess of this amount will be sole responsibility of the **CITY**.

**TOTAL LUMP SUM COST TO UDOT IS \$462,500.00**

5. Upon acceptance of said payment, and enactment of the jurisdictional transfer by the Utah Transportation Commission, that section of SR-235 from Milepost 3.660 to Milepost 4.860, totaling 1.20 miles, will be removed from the State Highway System and included in the **CITY's** roadway system. The **CITY** will thereafter have jurisdiction over said roadway section, and will be responsible for construction, maintenance, repairs, and operation of the roadway.
  6. The **CITY** agrees to accept and maintain the roadway and appurtenances covered herein at no further cost to UDOT, except **CITY's** Class B & C Road Funds, which will be adjusted accordingly. To the extent it may be lawful to do so, the **CITY** further agrees to relieve UDOT from any responsibility or liability that may result from the transfer of said facilities and the operation thereof.
-

Project No. SP-0134(2)11, Weber County  
SR-134, 2700 North, I-15 to Washington Blvd.  
**PLEASANT VIEW CITY CORPORATION**  
Jurisdictional Transfer of SR-235, 2550 North  
CID No. 78049 PIN 2572

IN WITNESS WHEREOF, the parties hereto have caused these presents to be executed by their duly authorized officers as of the day and year first above written.

ATTEST:

PLEASANT VIEW CITY CORPORATION, a  
Municipal Corporation of the State of Utah

*[Signature]* 4-23-04  
Name Date  
Recorder  
Title  
(Impress Seal)

*[Signature]* 4-20-04  
Name Date  
Mayor  
Title

\*\*\*\*\*

RECOMMENDED FOR APPROVAL:

UTAH DEPARTMENT OF TRANSPORTATION

*[Signature]*  
Project Manager  
4/23/04  
Date

*[Signature]*  
Region One Director  
4/26/04  
Date

APPROVED AS TO FORM:

Approved:

As evidenced by the signature below, the Attorney General's Office has reviewed this Agreement pursuant to Utah Code Annotated, Section 11-13-9, and authorizes and approves it.

\_\_\_\_\_  
UDOT Comptroller's Office,  
Contract Administrator  
\_\_\_\_\_  
Date

UTAH ATTORNEY GENERAL  
MARK L. SHURTLEFF

\_\_\_\_\_  
JIM BEADLES,  
Assistant Attorney General



# EXHIBIT A

**Pleasant View City Corporation  
2550 North Storm Drain Project  
Cost Estimate**

Date: Oct. 9, 2003

Description: Install a Storm Drain Line Along an Existing Ditch Alignment

Location: Along the North Side of 2550 North Street from the Pleasant View City Limit to 1000 West Street.

| Item   | Description  | Quantity | Units | Unit Price  | Total               |
|--|--|----------|-------|-------------|---------------------|
| <b>Storm Drain Improvements</b>                        |  |          |       |             |                     |
| 1  | Furnish and Install 30" Diameter Class III RCP Storm Drain Pipe                      | 6,140    | L.F.  | \$ 36.00    | \$221,040.00        |
| 2  | Furnish and Install 5' Diameter Precast Concrete Manhole w/ Ring and Cover           | 17       | Each  | \$ 1,500.00 | \$ 25,500.00        |
| 3  | Furnish and Install Imported Granular Trench Backfill                                | 9,820    | C.Y.  | \$ 6.00     | \$ 58,920.00        |
| 4  | Furnish and Install Bedding Gravel   | 2,750    | C.Y.  | \$ 4.00     | \$ 11,000.00        |
| <b>Road Improvements</b>                               |  |          |       |             |                     |
| 5  | Install 2" Asphalt Overlay on 2550 North From Pleasant View City Boundary to S.R. 89 | 2,100    | Tons  | \$ 33.00    | \$ 69,300.00        |
| 6  | Misc. Excavation, Grubbing, Clearing & Culvert Removal                               | 1        | L.S.  | \$10,000.00 | \$ 10,000.00        |
| 7  | Raise and Collar Existing Water Valves   | 6        | Each  | \$ 200.00   | \$ 1,200.00         |
| 8  | Raise and Collar Existing Manholes   | 15       | Each  | \$ 300.00   | \$ 4,500.00         |
| <b>Project Subtotal</b>                                |  |          |       |             | <b>\$401,460.00</b> |
| <b>Design, Surveying, Inspection &amp; Contingency</b> |  |          |       |             | <b>\$61,040.00</b>  |
| <b>Total Estimated Project Costs</b>                   |  |          |       |             | <b>\$462,500.00</b> |